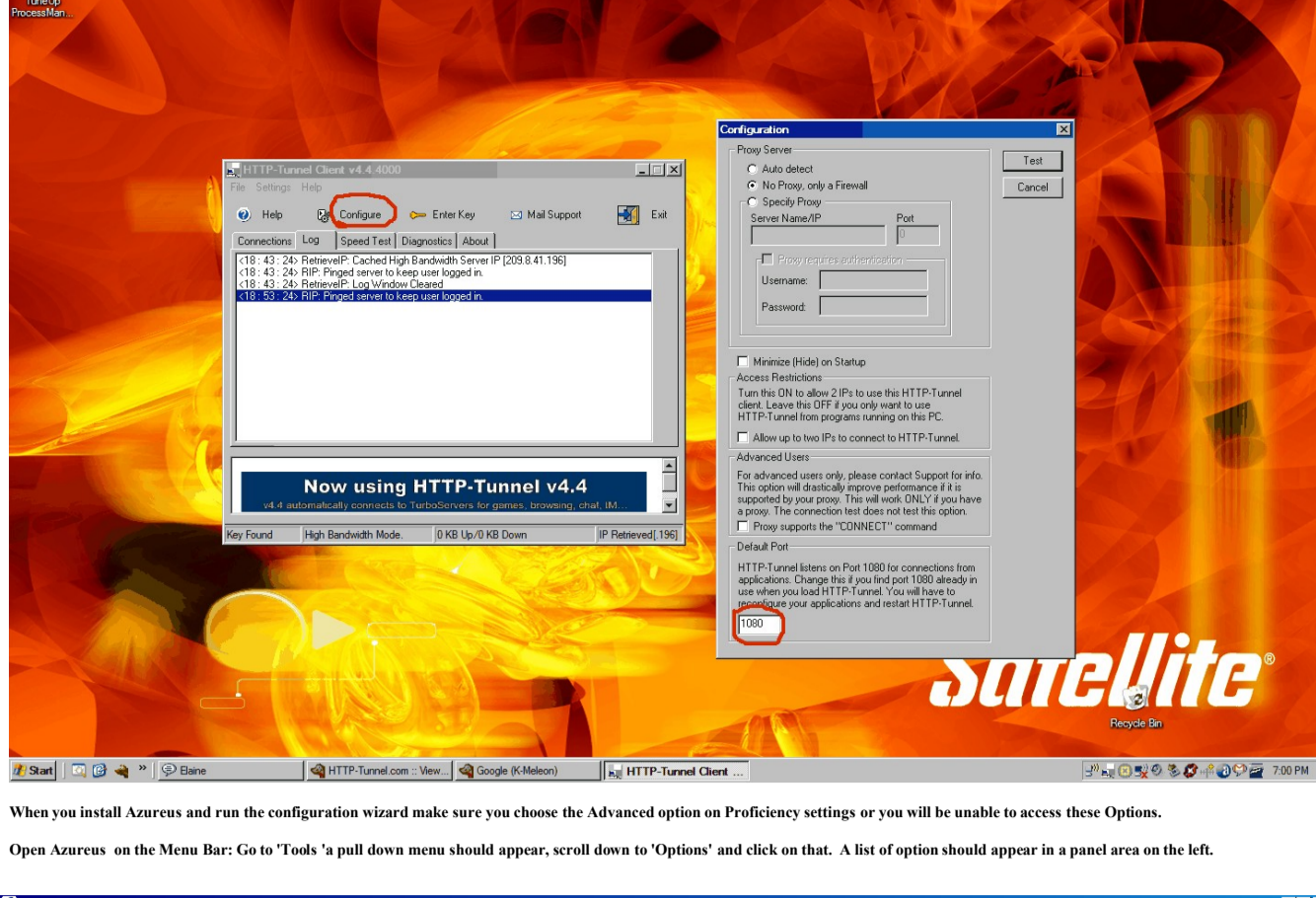


This guide will show you how to configure Azureus to use the HTTP-Tunnel client. **Http-Tunnel does not provide technical support for this product.** Wiki has extensive information and easy to follow instructions that covers virtually any circumstance and set up. You can find the article here: http://www.azureuswiki.com/index.php/Main_Page

Once you have Http-Tunnel installed, run the application, The main window will appear, choose the configure option. There you will be presented with three (3) options.

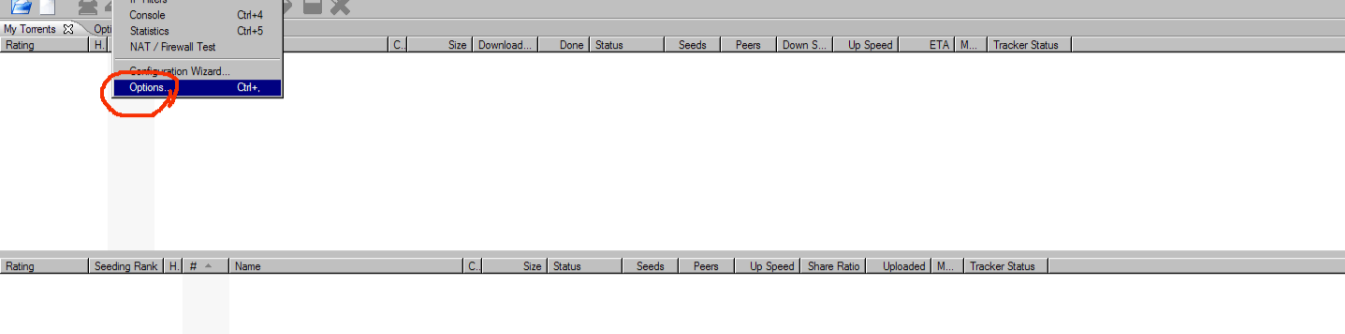
1. You can Select Auto detect if you want Http-Tunnel to detect your settings.
2. No Proxy, only a firewall if this is appropriate.
3. Specify Proxy, Here you will enter the IP address and Port number of the proxy that you use.

Complete 1 of the 3 options, then click test, the client will bind to port 1080 and localhost by default and connect to the tunnel servers if your settings are correct.



When you install Azureus and run the configuration wizard make sure you choose the Advanced option on Proficiency settings or you will be unable to access these Options.

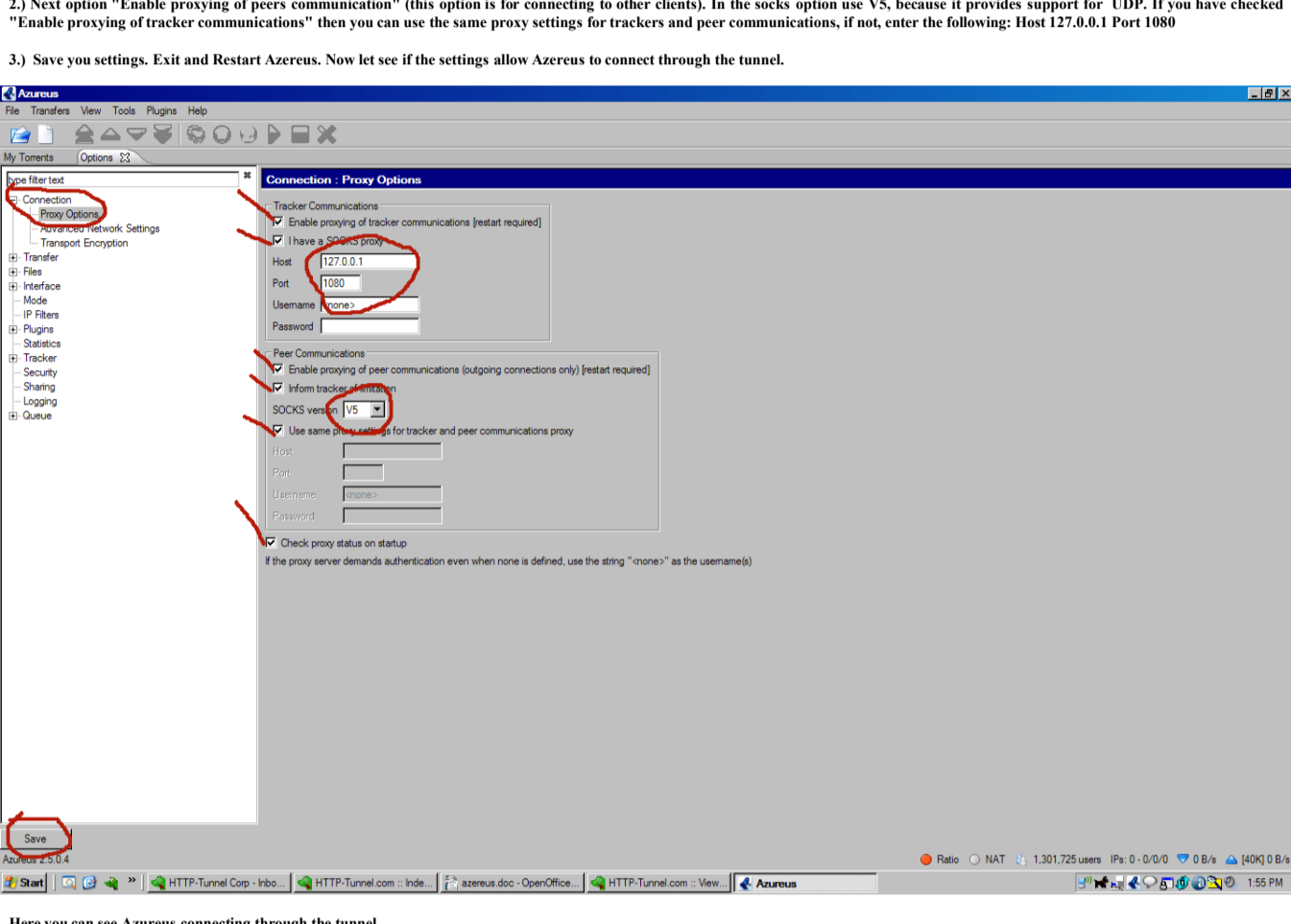
Open Azureus on the Menu Bar: Go to 'Tools' a pull down menu should appear, scroll down to 'Options' and click on that. A list of option should appear in a panel area on the left.



1.) In proxy options you can enable the first option "Enable proxying of tracker communications" (this option is for communicating with the tracker), be aware if you use a registered tracker its better to not check this option. If you enable this option use the following: Host 127.0.0.1 and Port 1080

2.) Next option "Enable proxying of peers communication" (this option is for connecting to other clients). In the socks option use V5, because it provides support for UDP. If you have checked "Enable proxying of tracker communications" then you can use the same proxy settings for trackers and peer communications, if not, enter the following: Host 127.0.0.1 Port 1080

3.) Save you settings, Exit and Restart Azureus. Now let see if the settings allow Azureus to connect through the tunnel.



Here you can see Azureus connecting through the tunnel.

