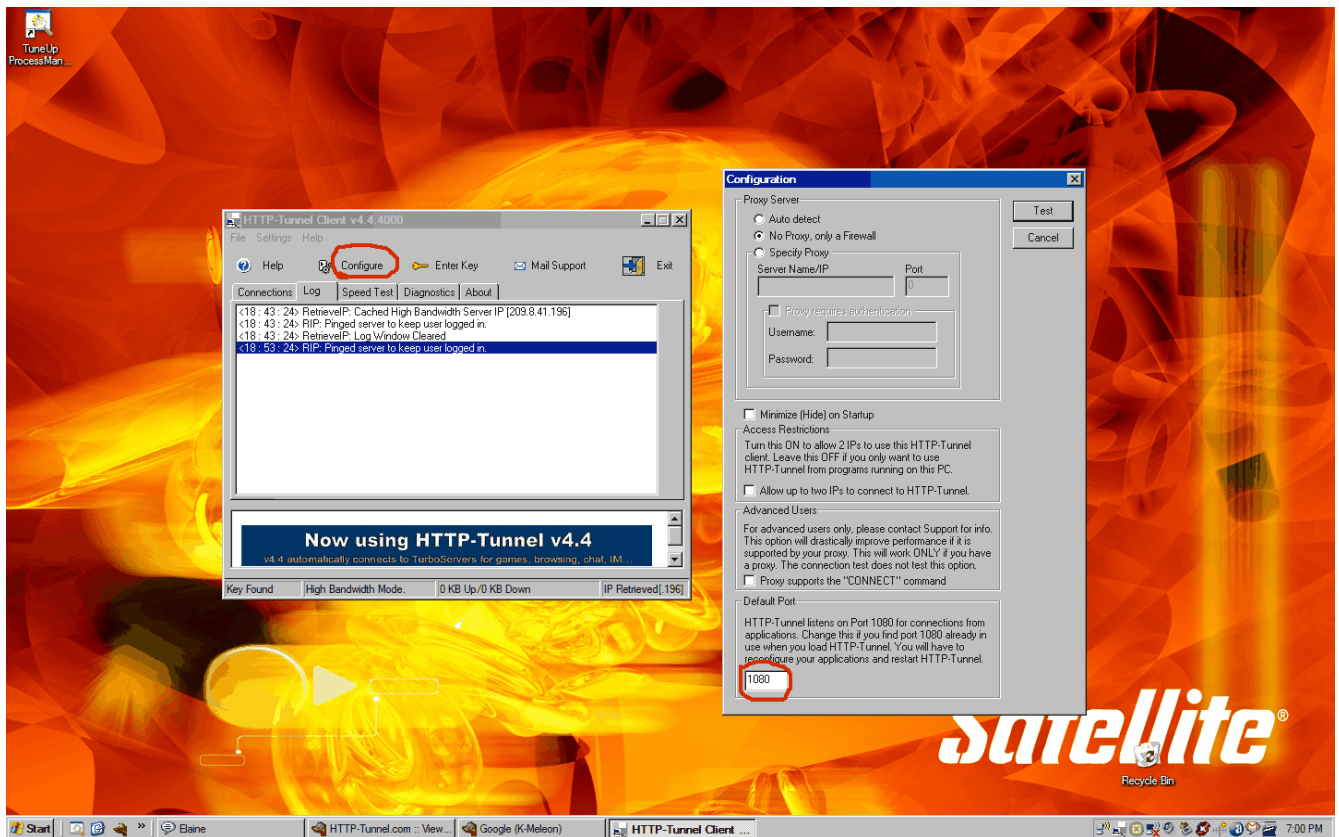


This is the guide to configure Netscape Web browser to use with HTTP Tunnel.
Please note that its only a configuration guide,we do not provide any support related to this specific client.

Once you have Http-Tunnel installed, run the application, The main window will appear, choose the configure option. There you will be presented with three (3) options.

1. You can Select Auto detect if you want Http-Tunnel to detect your settings.
2. No Proxy, only a firewall if this is appropriate.
3. Specify Proxy, Here you will enter the IP address and Port number of the proxy that you use.

Complete 1 of the 3 options, then click test, the client will bind to port 1080 and localhost by default and connect to the tunnel servers if your settings are correct.



Go to Tools ->Options.

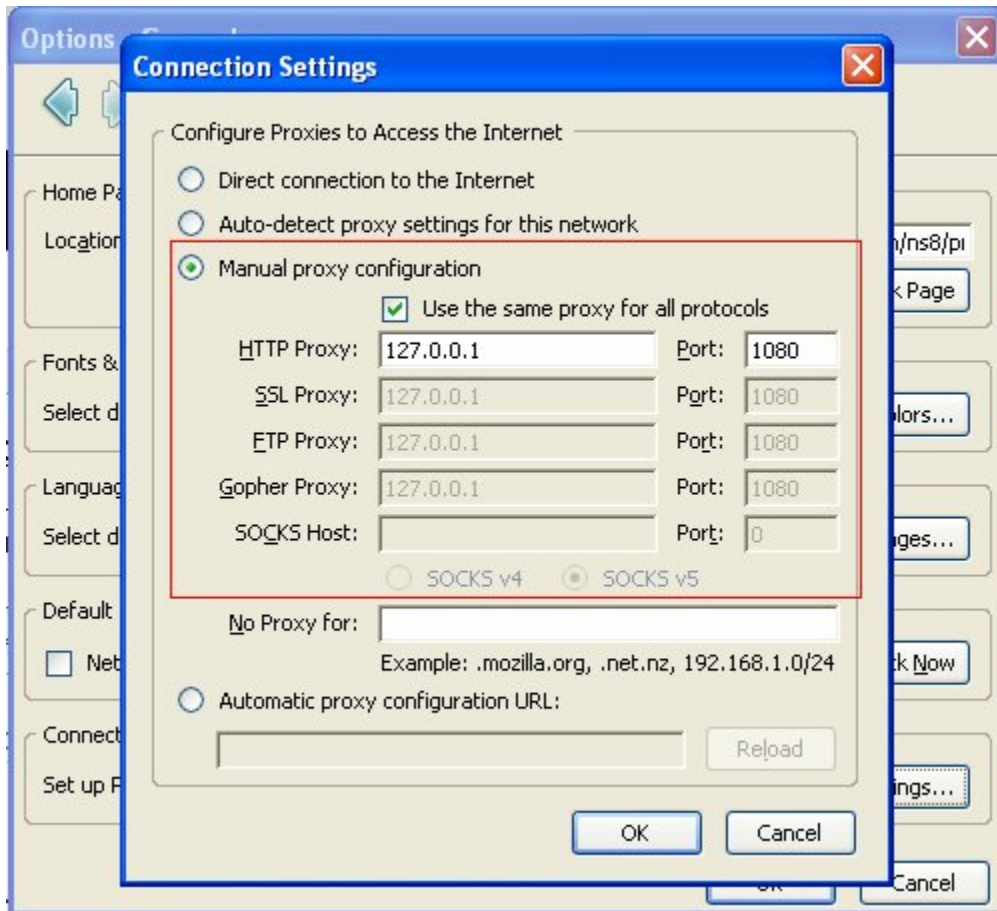
In the Window that opens up go to General,then click on Connection Settings.
Enable “Manual Proxy Configuration”

a)HTTP Configuration

In the HTTP Proxy put 127.0.0.1 and for Port use 1080

Enable “Use the same proxy for all protocols”

Your screen should look like below,make sure the Socks Host field is empty

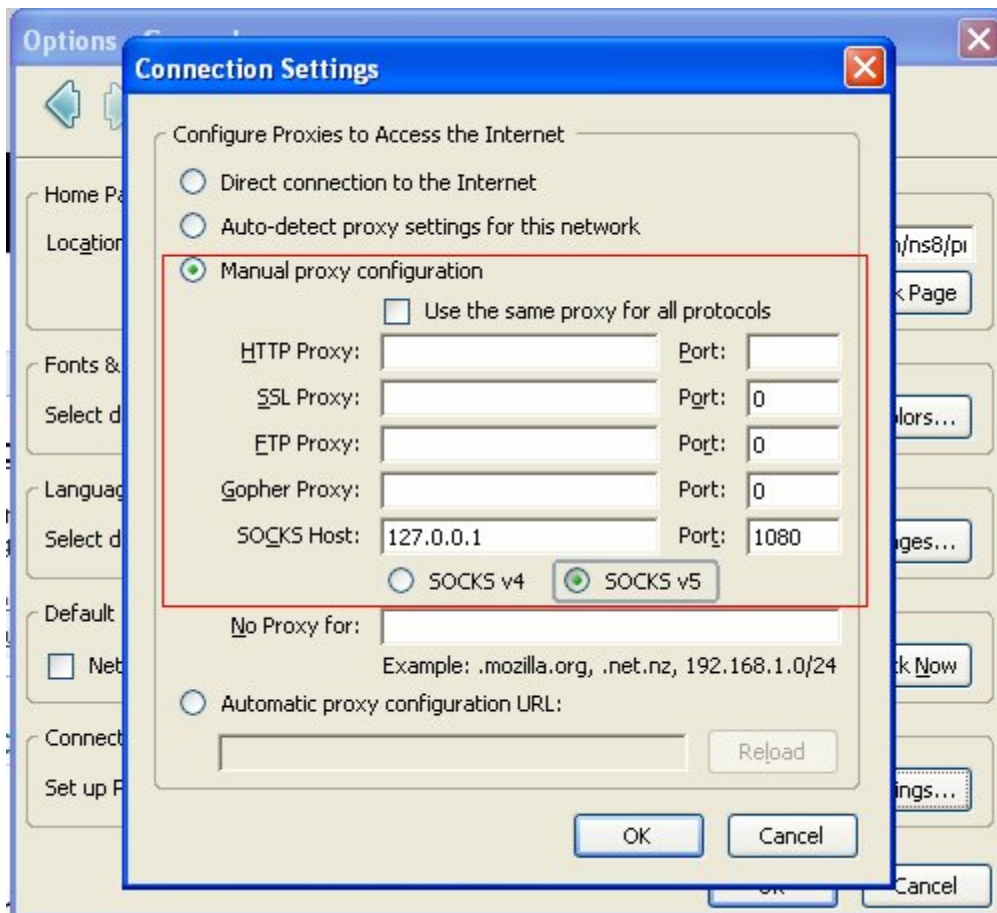


b)SOCKS Configuration

In the SOCKS Host put 127.0.0.1 and for Port use 1080

You can choose either SOCKS v4 or SOCKS v5,experiment with both and see which gives you better performance

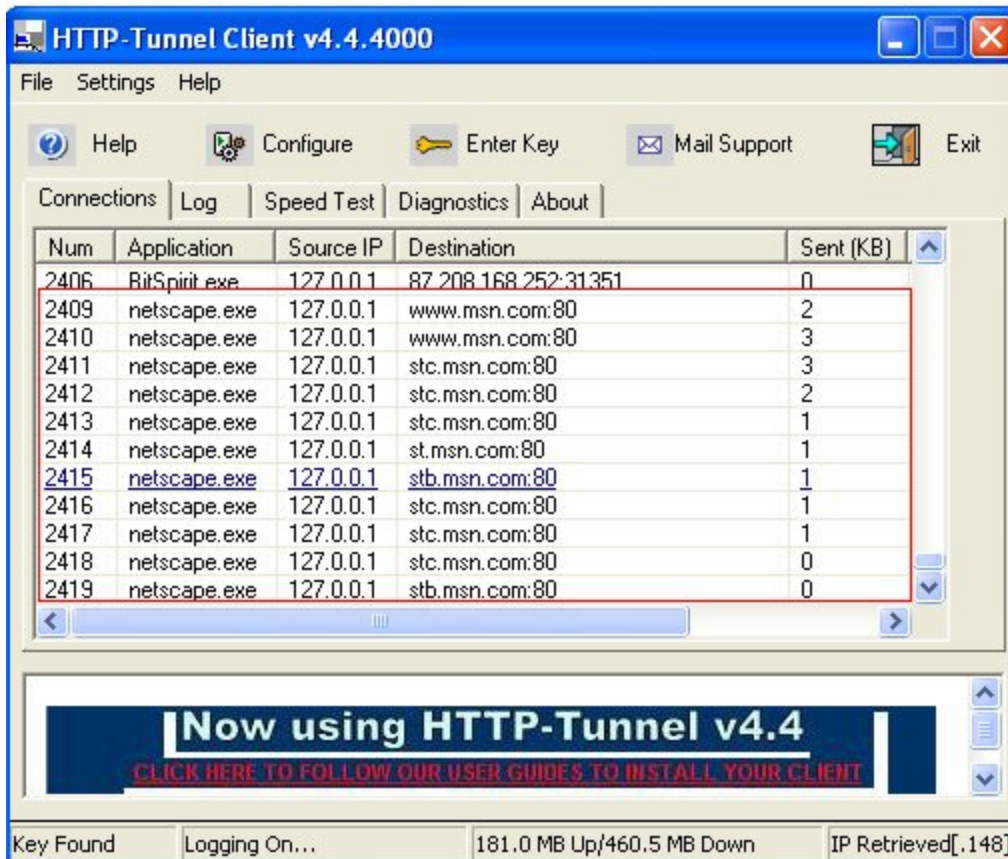
Your screen should look like below,make sure that the other proxy fields are empty



You can use any of the above configurations, it depends on which gives you better performance

You should see it connecting via HTTP Tunnel

Here for example I connected to the msn website using HTTP Configuration



And this was using SOCKS Configuration

